



LAND LIFE
COMPANY

— Fresno de Rodilla, Spain: 100 ha forest fire restoration.

An aerial photograph showing a vast, degraded landscape with a grid-like pattern of erosion. In the background, a line of wind turbines is visible against a clear sky. The foreground shows a dark, shadowed area, possibly a restored forest fire site.

Our mission:
Restore the world's 2 billion
hectares of degraded land

100 ha forest fire restoration in Fresno de Rodilla, Spain

A world map with a blue background and light grey landmasses. Colored dots of various sizes are placed across the map to indicate project locations. The dots are categorized by color: orange for 'Iconic', white for 'Pipeline', green for 'Pilot', and blue for 'Large Scale CO2'. There is a high concentration of orange dots in East Asia, particularly in China. Other orange dots are scattered across South America, Africa, and Europe. A few green dots are located in Asia and Africa. Two blue dots are visible in East Asia and North America. Two white dots are located in Europe and Africa. The text 'Projects in 25+ countries' and '1.6 million planted' is centered over the map.

Projects in 25+ countries
1.6 million planted

● Iconic ● Pipeline ● Pilot ● Large Scale CO2

Land Life Company - Quarterly update

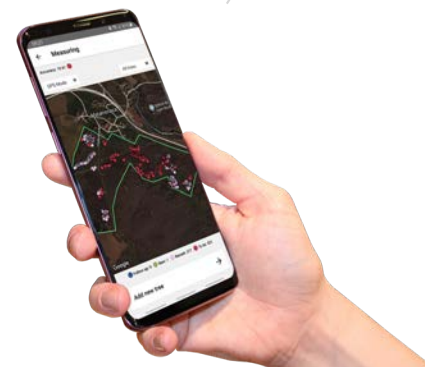


Technologies such as 3d modeling, AI, robotics, monitoring allow monitoring of the exact location and species down to the Tree ID level – all at scale



Each tree is monitored over time:
Exact location: Lat/Long: 42.837856, -4.326306
Species & Treatment: Rowan – *Sorbus aucuparia* w/Cocoon
Vigor rating: 3 Height: 56cm's (07/03/18)
Elevation: 850m (slope facing: NNE)
Tree id: 0000180001719

Tree id: 0000180001611



Land Life's tech & data-driven approach enables large scale reforestation whilst significantly increasing seedling survival rates and reducing project costs



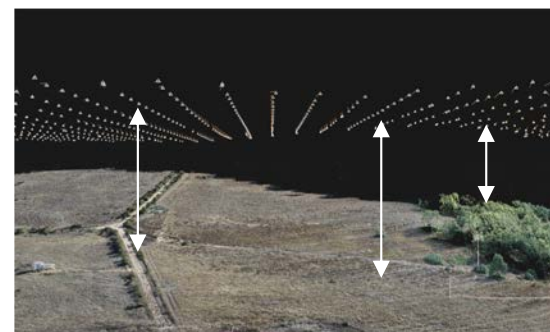
Pre-planting analysis

- Build 3D models using drone data and develop planting strategy:
 - Species selection
 - Plot design - hydrology
 - Nursery management
 - Soil analysis



Planting

- Cocoon technology
- GPS drilling & tracking
- Automated planting
- On-ground training



Monitoring

- Drone & satellite data
- Automated remote sensing - LiDAR, NVDI, etc
- AI & Blockchain reporting
- Analysis synced to database

Customers and partners



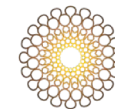
NORDIAN
CAPITAL PARTNERS



McKinsey
& Company



GroenLeven
zonne-energie



إكسبو 2020
دبي، الإمارات العربية المتحدة
DUBAI, UNITED ARAB EMIRATES



The Nature
Conservancy



staatsbosbeheer



the
guardian



THE
NEW YORKER



Join our Climate Leader program: In three steps towards carbon neutrality and beyond



We translate your carbon footprint into a number trees.

We plant trees in geographies that matter to you and your stakeholders.

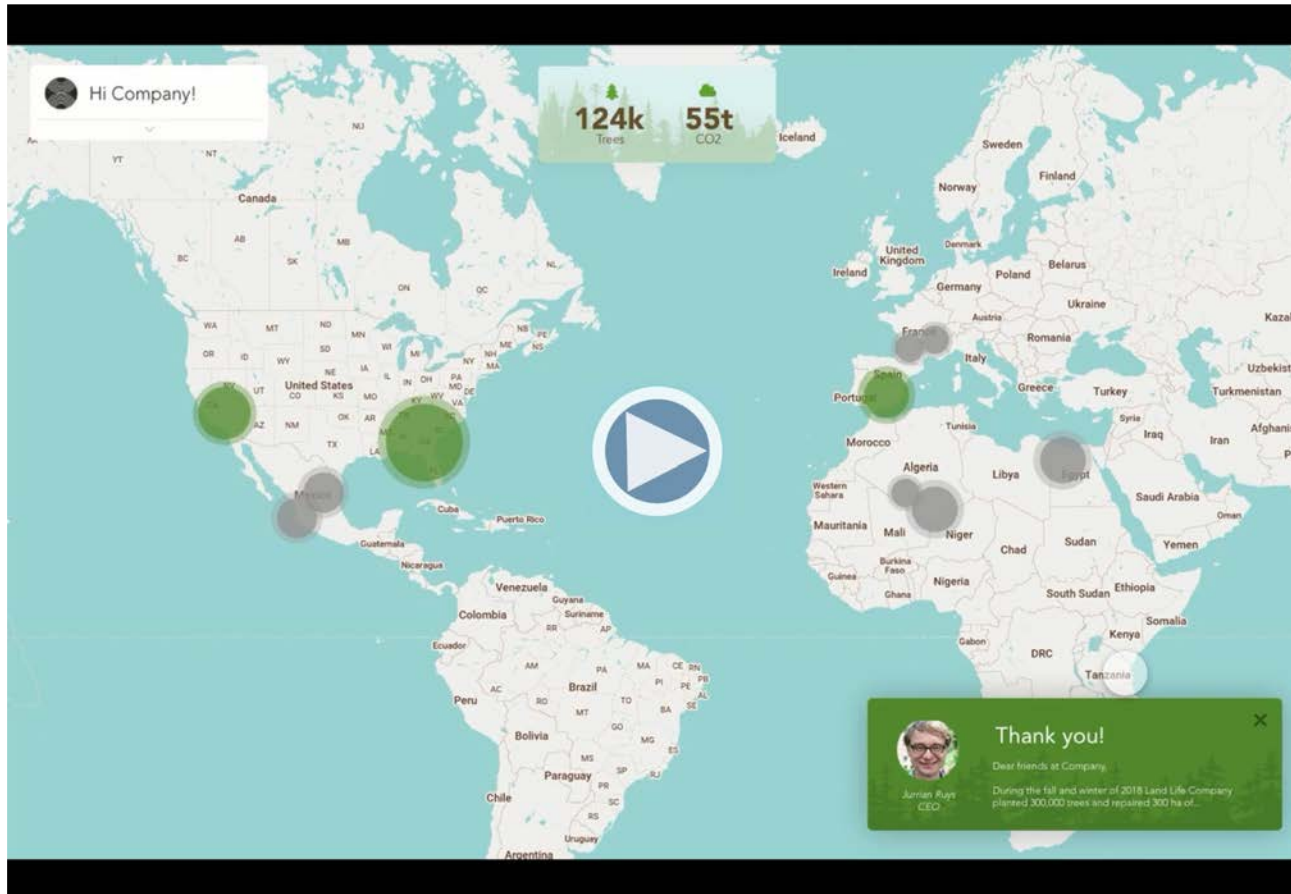
Make your claim and show your impact. We'll provide the materials.

Create or add to your existing offset portfolio to build your climate leadership impact.

Arrange employee and customer plantings to build awareness and enthusiasm.

Engage your stakeholders via the interactive customer dashboard: share stories from the field, tree statistics and drone images & video of your growing trees.

The Customer Global Dashboard monitors all projects in a unified interface, which can be shared with employees, users and stakeholders

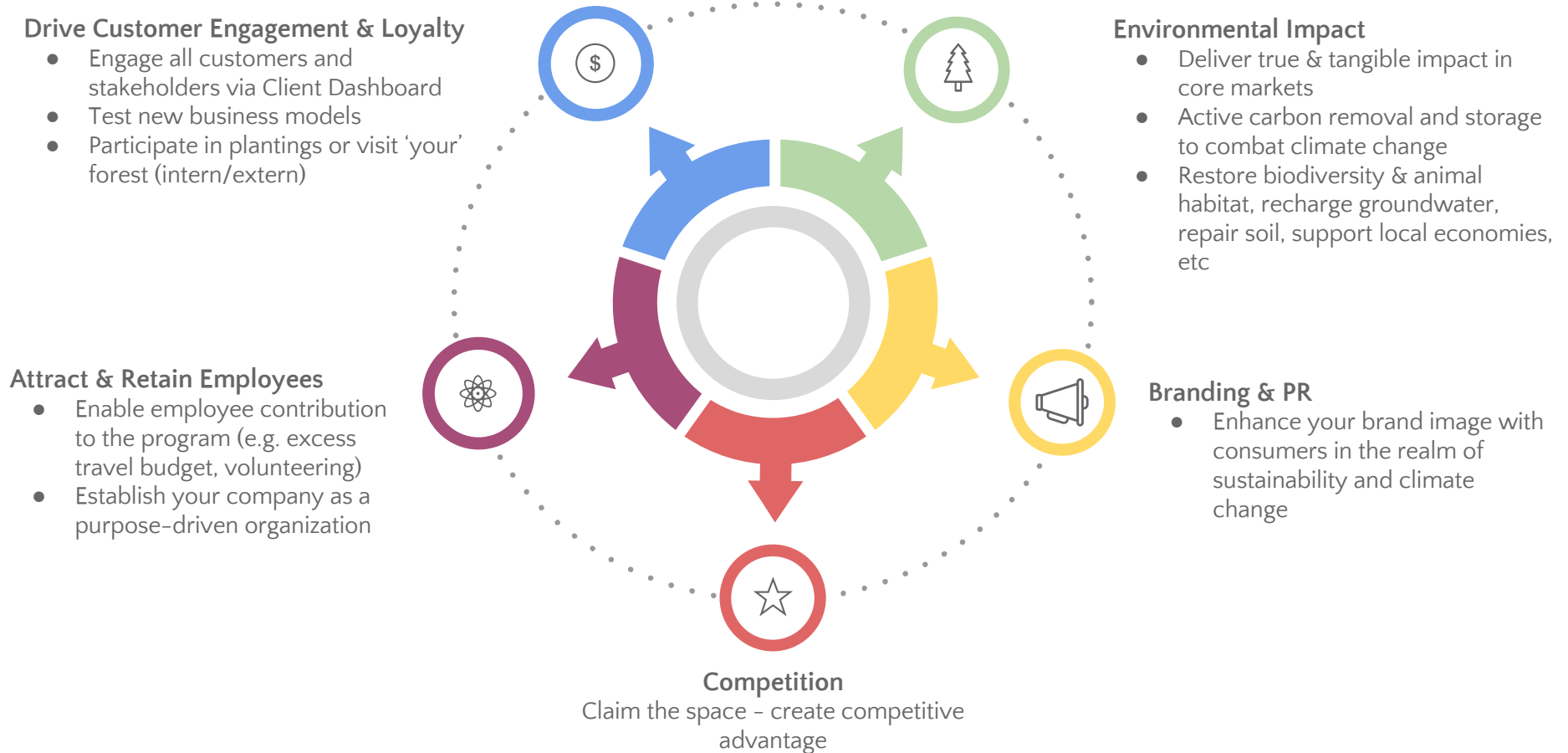


Inform your visitor about the CO2 compensation projects, including pictures, stories from the field, and the impact reforestation delivers including its co-benefits, etc.

This interactive type of storytelling will increase awareness & engagement and support the initiative.

- Customer portal will have API connector to display customized data
- Show your projects via interactive manner
- Available Fall 2019

The Climate Leader program generates benefits in key areas of your organization



Land Life raises the bar on carbon offsetting: It is not just about CO2



Real Impact

- Multi-Benefit: CO2, Water, Biodiversity, Animal Habitats
- Support several United Nations Sustainable Development Goals
- 60-70% invested directly in local communities
- Climate positive impact - actively removing CO2 from the air

Permanence

- Permanence is guaranteed beyond 40 years by statutory and legal protection
- Reforestation on degraded, protected, public lands in EU, US, MX, AU
- Eligible for registration on globally recognized standards

Additionality

- Reforestation would not have happened otherwise
- Land is not in competition for alternative use
- No alternative funds available

Engagement

- Reforestation in local & relevant markets
- Online interactive customer portal
- Brand building / CSR
- HR: Attract & retain talent

Transparency

- GPS coordinates & Google maps
- Planting reports, satellite pictures, drone videos, site visits, planting days
- Third party audits



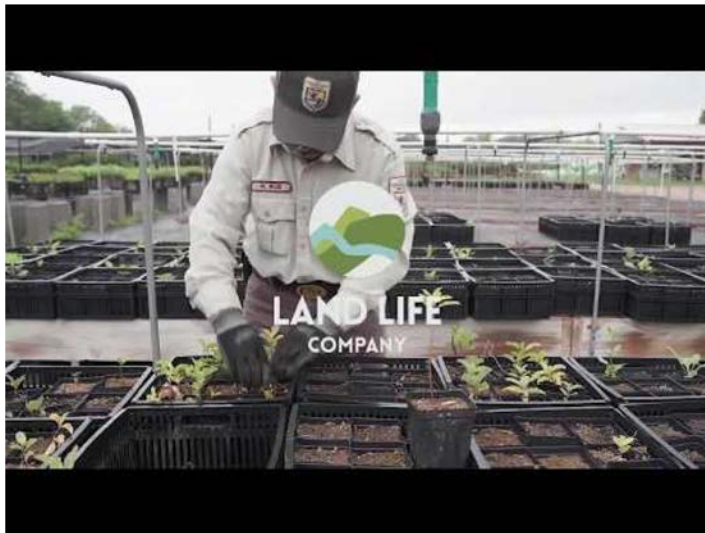


USFWS Refuge

TEXAS, UNITED STATES OF AMERICA

Regenerating a biodiversity hotspot to restore animal habitats, attract ecotourism and generate employment for young adults

The University of Texas
Rio Grande Valley



[\(click to view video\)](#)



Castilla y León

Autonomous community - SPAIN

*Bringing new purpose and life to abandoned agricultural land and land lost to wildfires.
Working closely with government, local partners and local communities.*



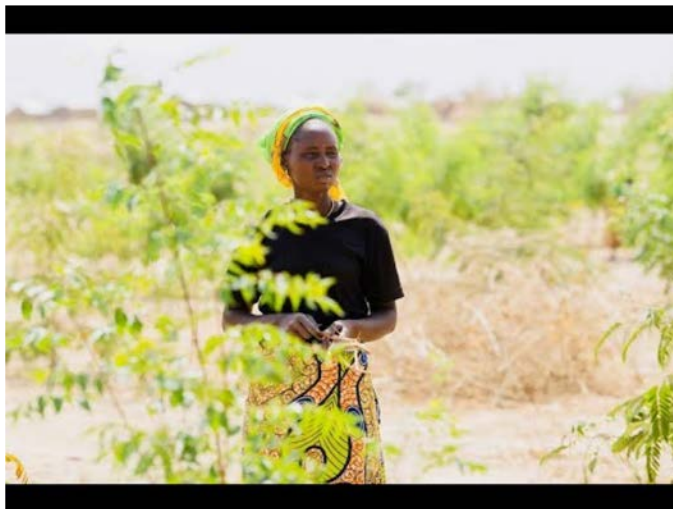
(click to view video)



Minawao Camp

CAMEROON

Reforestation of a UNHCR refugee camp to provide livelihoods for refugees



(click to view)



Salton Sea

CALIFORNIA, UNITED STATES OF AMERICA

Mitigate the health and environmental impacts of the toxic dust from the Salton Sea that adversely affects Native American tribal communities



Deschutes National Forest

OREGON, UNITED STATES OF AMERICA

Post-fire reforestation of the Deschutes National Forest, Oregon's largest national forest, to repair the 24,000 acres ravaged by the 2017 Mill Fire.



Wind Wolves Preserve

CALIFORNIA, UNITED STATES OF AMERICA

OBJECTIVE

Reforestation to reverse 2 centuries of land degradation in Southern California.

ENGAGEMENT

Visitors of largest West coast nonprofit preserve and children participating the *Outdoor Discovery Program*.



Selected Photos





























Selected Videos

Land Life Company - Quarterly update



Spain - Fresno de Rodilla



Customer Portal



Risutec – Automated Planting



Minawao Refugee Camp – 14 months later



Kara Kara Wedderburn, Australia

